

2nd Round EMS / Fire Services Municipal Service Review Sphere of Influence Updates

Prepared by:



Project Team



Mike Oliver
Brian Kelly

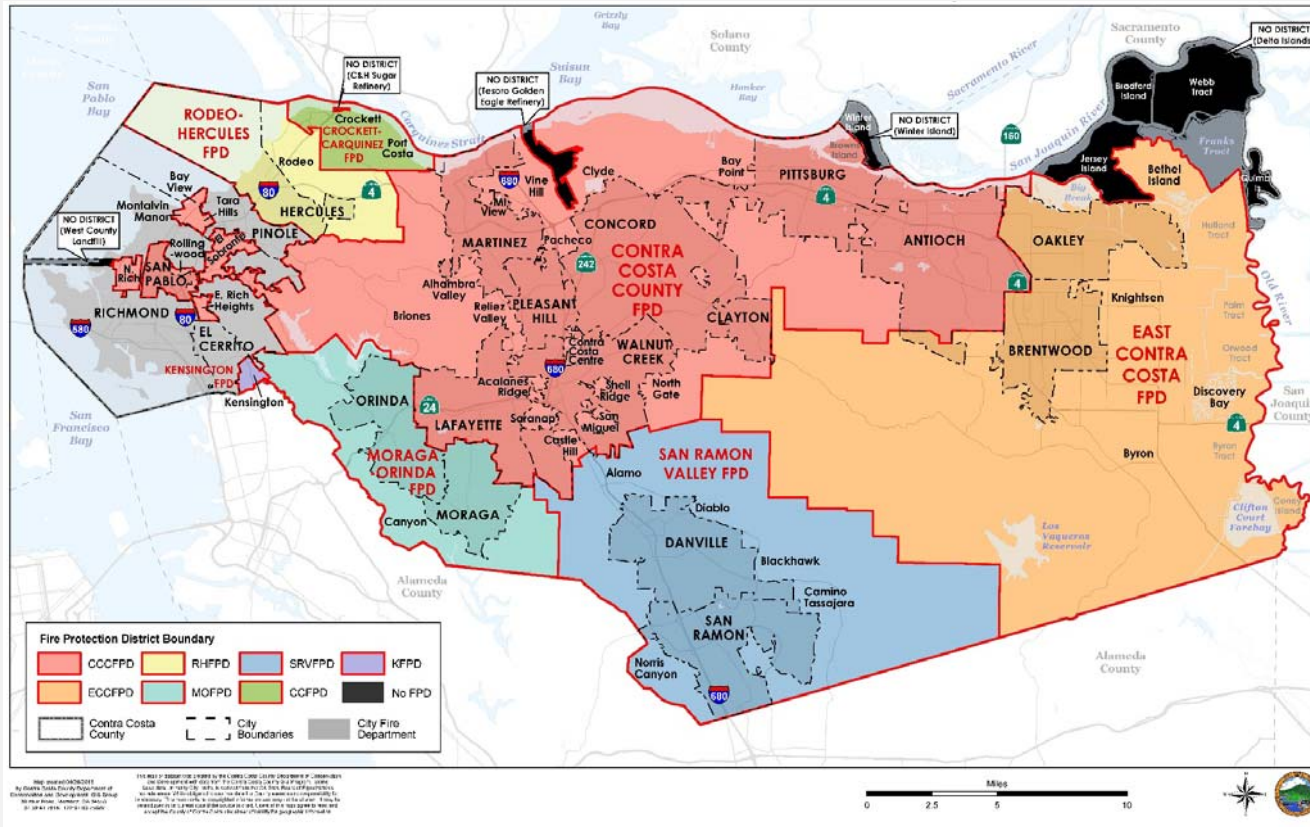


Richard Berkson

Overview

1. Project Objectives
2. Agency Engagement
3. Focus Area Challenges
4. Fire Service Response Adequacy
5. Review of Aid Agreements
6. Observations + Recommendations

Project Objectives



MSR – 2nd Round Review
 – 3 cities, 8 districts

MSR Focus Areas:

- East County (ECCFPD)
- Rodeo-Hercules (RHFPD)

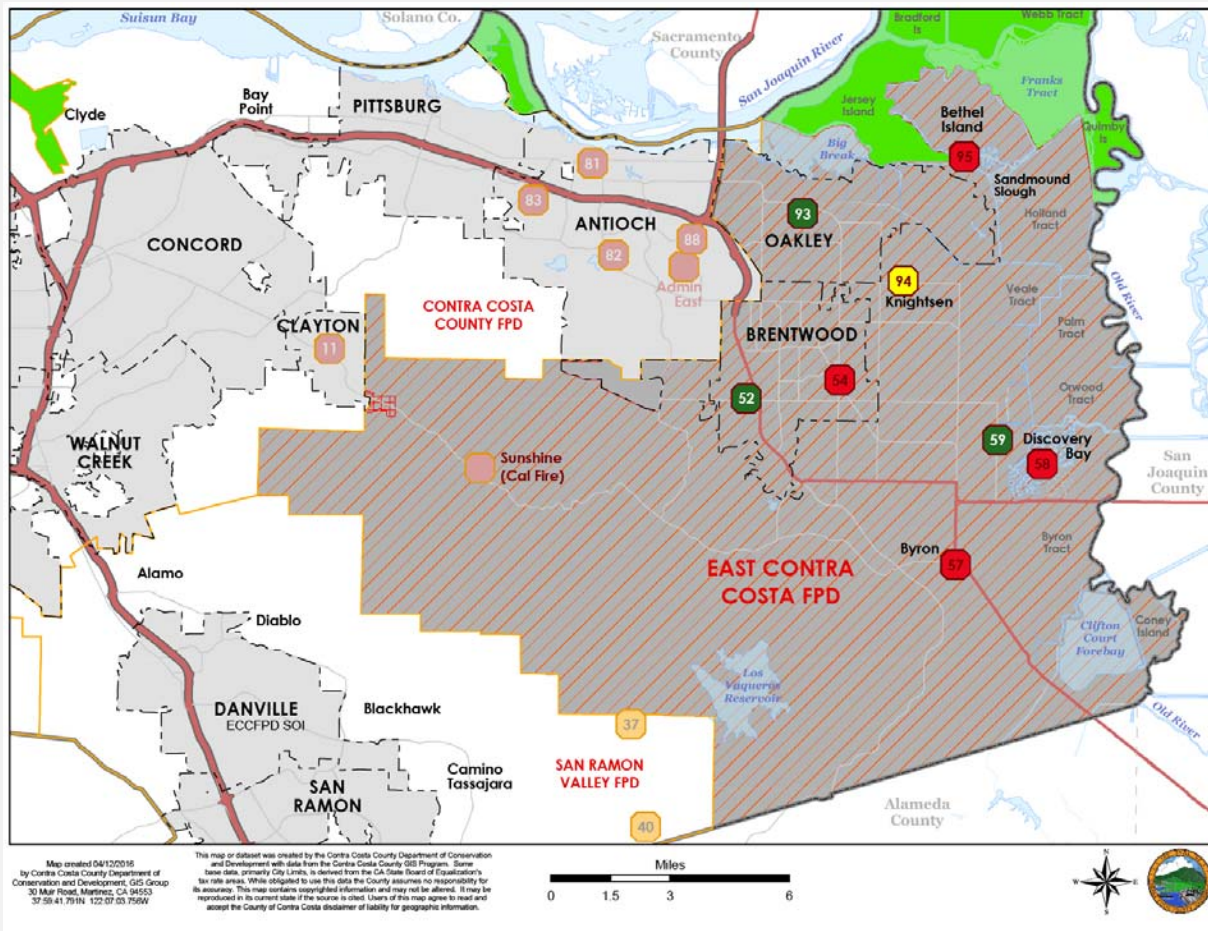
ConFire Relationship to Focus Areas

Review of Automatic Aid Agreements

Agency Engagement

- ECCFPD Chief
- Rodeo/Hercules Chief & Board Member
- Brentwood & Oakley City Managers
- ConFire Chief & Staff
- Contra Costa County Fire Chiefs
- City of Pinole Chief & City Manager
- Moraga Orinda Fire Chief (Fire Mutual Aid Coordinator)
- City of Richmond Chief & Staff
- City of El Cerrito/Kensington FPD
- San Ramon Valley Fire District Chief & Staff
- County EMS Director & Staff
- CCCERA Staff
- IAFF 1230 President & Officers
- Joint West County Meeting
- Correspondence with Crockett-Carquinez FPD staff

East County Fire Protection District



- Dependent fire district
- Area: 249 sq mi
- Population: 119,125
- 3 Stations
- Population per Station: 38,300
- Area per Station: 83 sq mi
- 90% of Responses: 11:58 mins
- Rural vs. Suburban
- 2 Cities

East County FPD - Challenges



- Low Property Tax Rates



- Loss of Revenue

- Rising Retirement Costs



- Historically a Volunteer Force



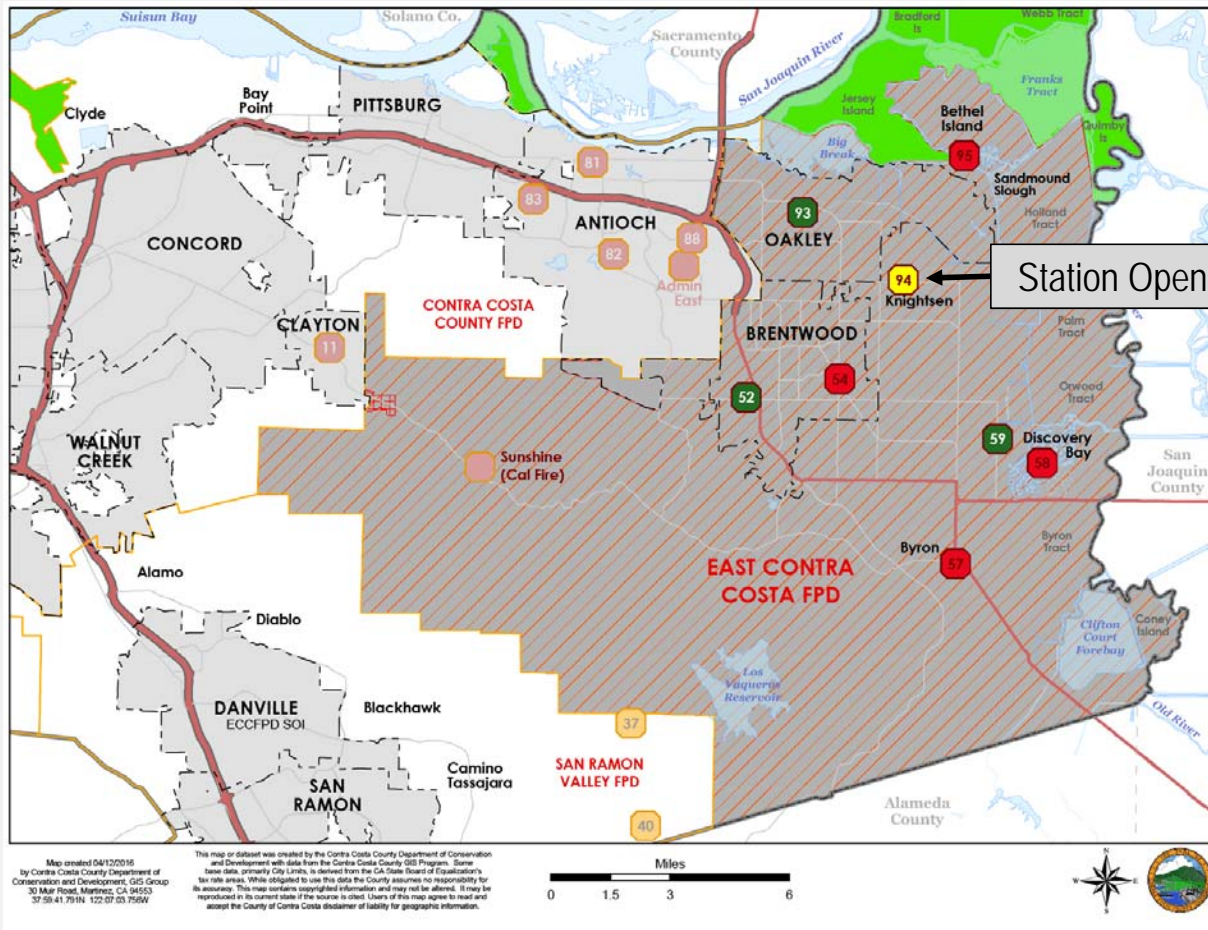
- Increased Urbanization



- Special Tax Measure Defeated

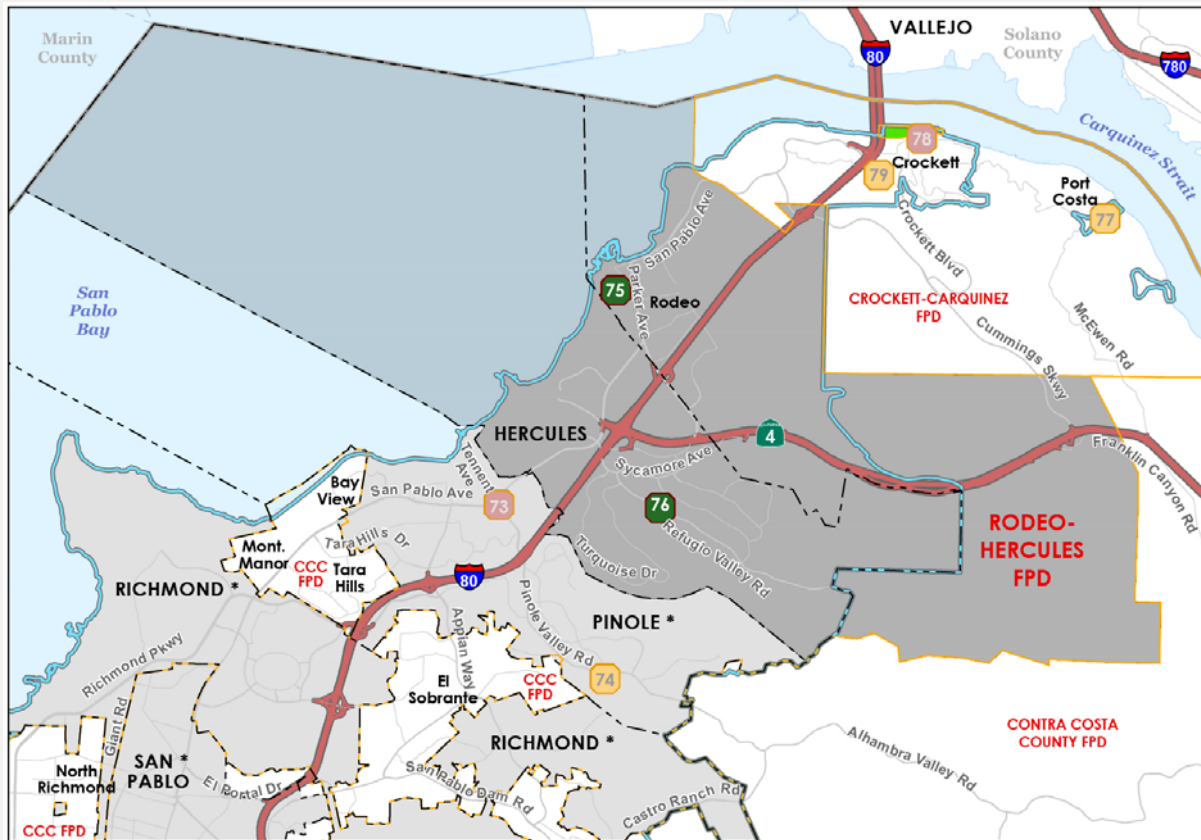
- Benefit Assessment Defeated

East County FPD – Station Closures



- ECCFPD had 8 stations open and staffed in 2010
- Currently only 3 stations are open
- Recently-formed Task Force identified funding to reopen Knightsen station in summer

Rodeo Hercules Fire Protection District



- Independent fire district
- Area: 25 sq mi
- Population: 33,000
- 2 Stations
- Population per Station: 16,500
- Area per Station: 12.5 sq mi
- 90% of Responses: 9:43 mins
- Dispersed Geography/ Poor Accessibility

Rodeo Hercules FPD - Challenges

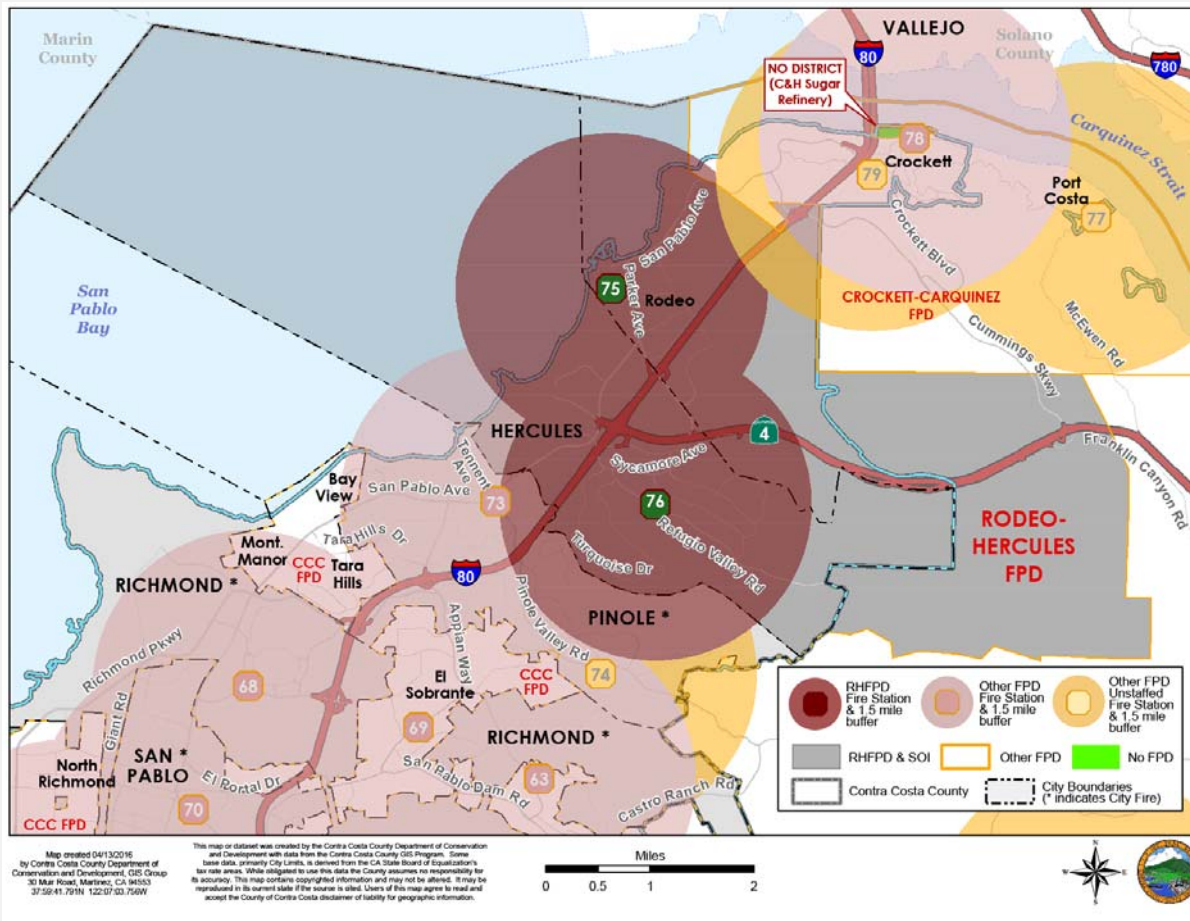


- Low Property Tax Rates
- Loss of Revenue to Redevelopment
- Reduced Property Tax from Refinery reassessment
- SAFER Grant (Staffing for Adequate Fire and Emergency Response) expired
- 2014 Benefit Assessment District eliminated by legal settlement



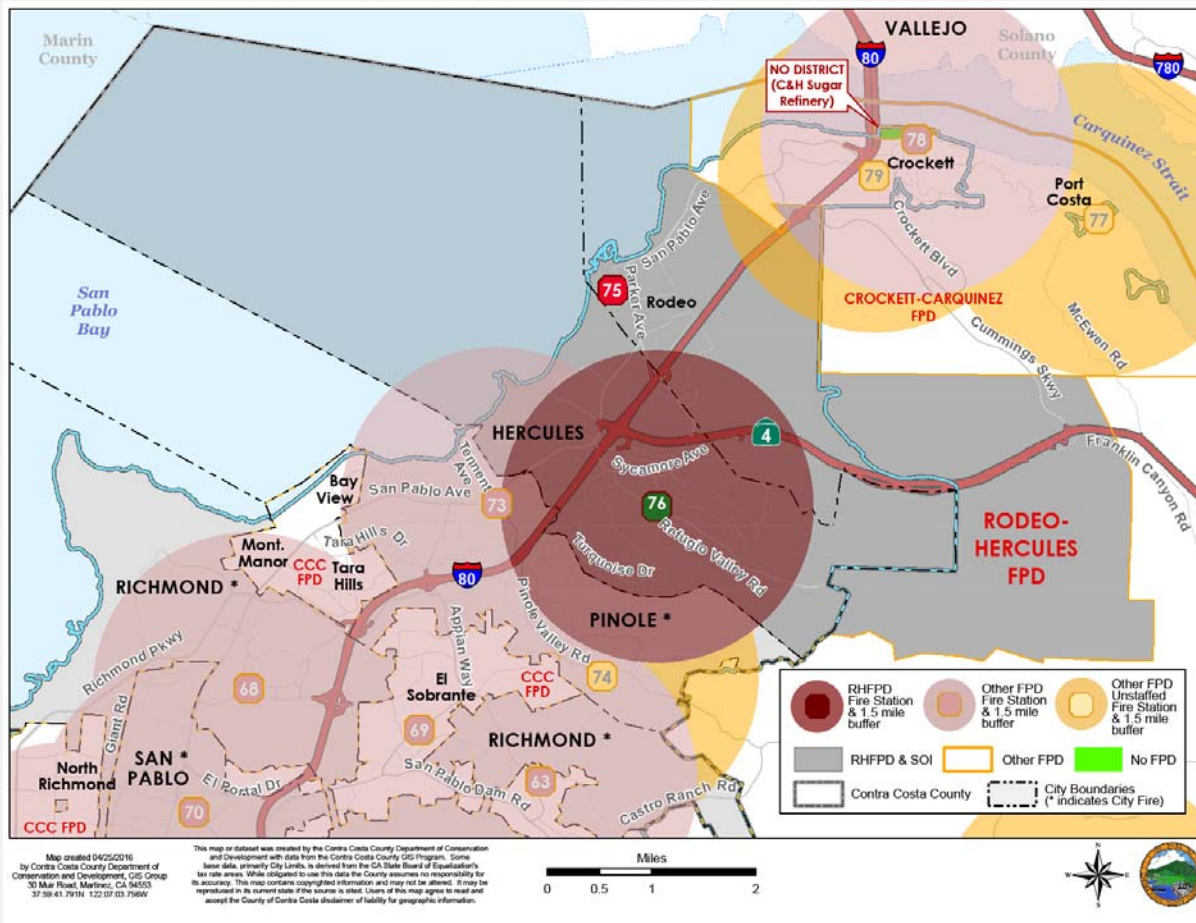
- Board Turnover
- Staffing Changes

Rodeo Hercules FPD - Station Closures



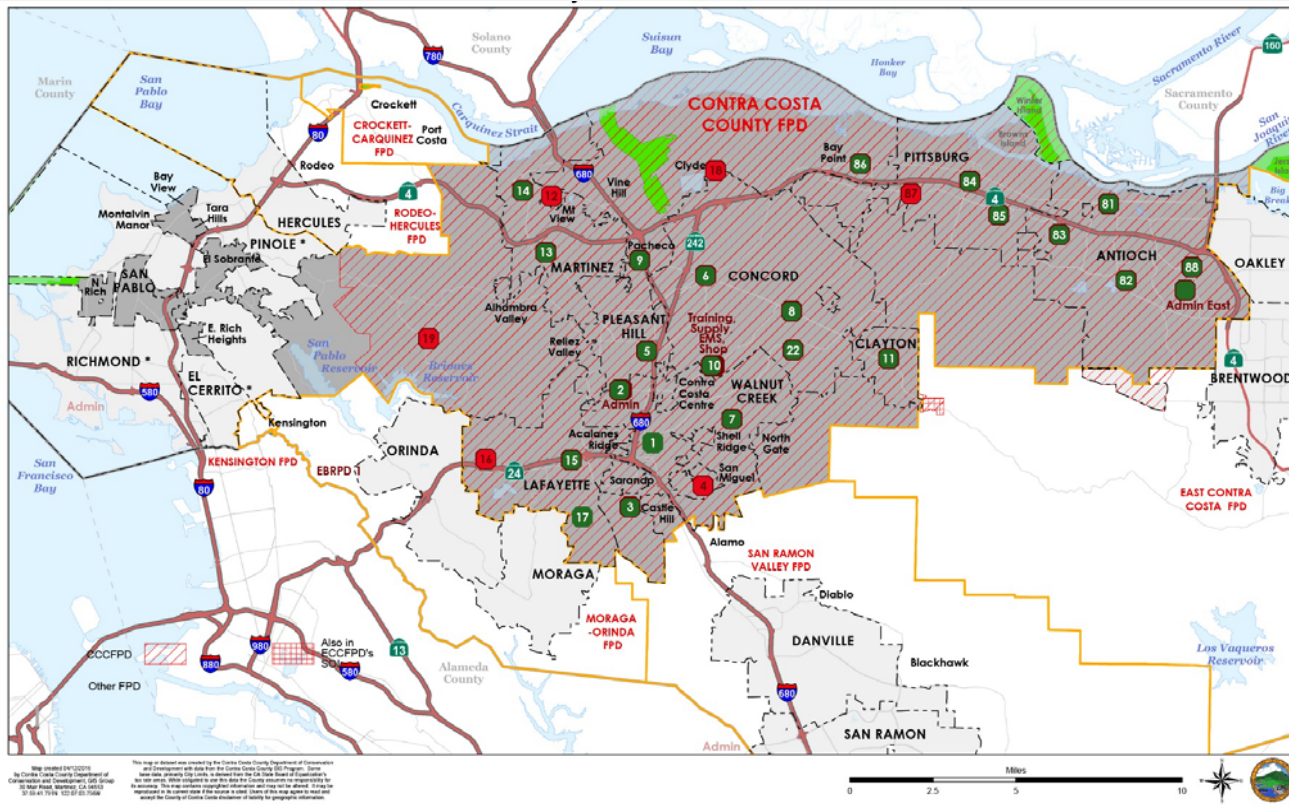
- Station 75 is at risk of closure due to expiration of SAFER Grant funding and loss of Benefit Assessment District

Rodeo Hercules FPD – Station Closures



- One remaining station would provide inadequate coverage and reduce response times and backup to other agencies

ConFire



- Dependent fire district
- Area: 351 sq mi
- Population: 597,887
- 24 Stations
- Population per Station: 24,900
- Area per Station: 14.6 sq mi
- 90% of Responses: 9:33 mins

ConFire - Challenges



- Loss of Revenue
- Increased retirement costs



- Need for self-sustaining Equipment Replacement Fund

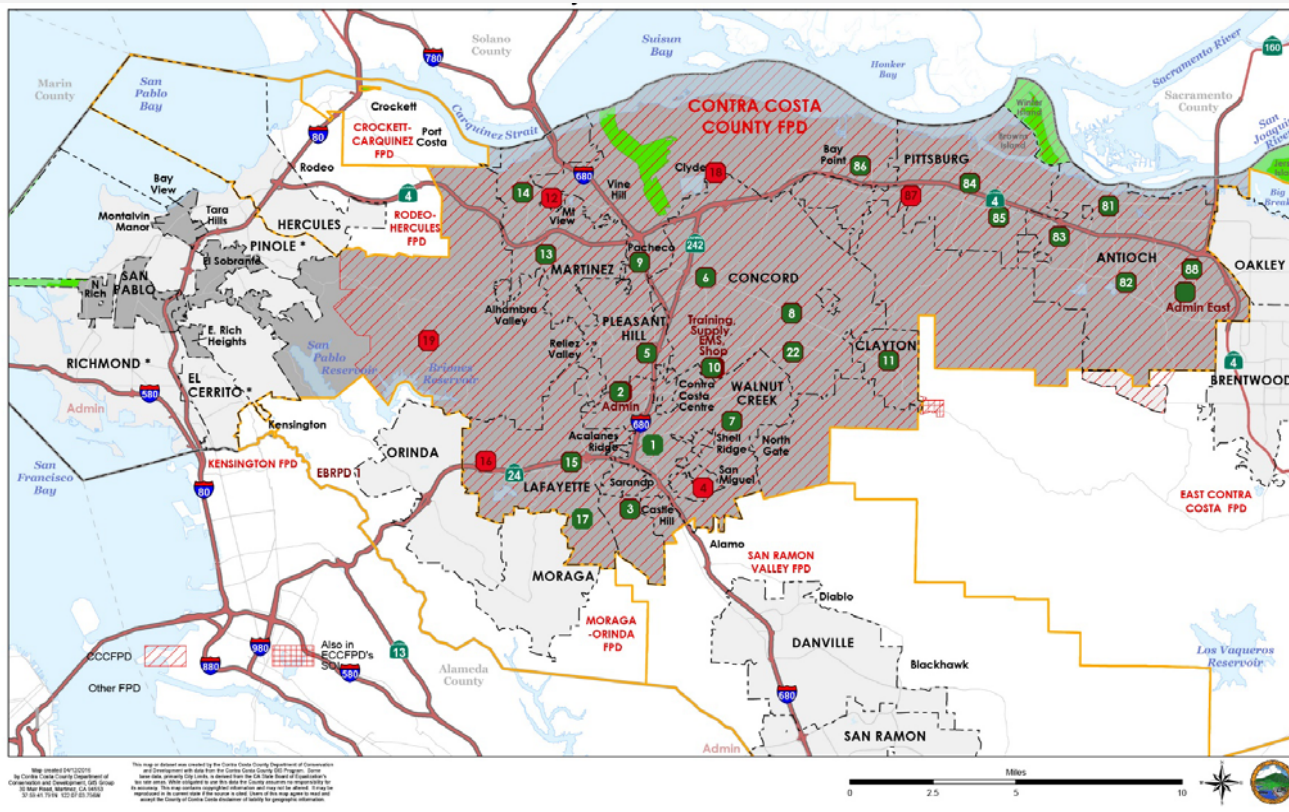


- Joint Response EMS Services newly implemented



- Special Tax Defeated

ConFire - Station Closures



- A failed parcel tax measure (Measure Q) in 2012 forced the closure of four fire stations

Fire/EMS Service Adequacy – Response Time



8:59 minutes



5:20 minutes

- Fire agencies do not meet standards 90% of time
- ECCFPD times are excessive
- RHFPD station closure will adversely affect response times in West County
- Standards shown are for first response –RHFPD and ECCFPD rely on aid from other agencies for add'l equipment and staff in the event of a fire

Review of Aid Agreements

- All agencies in the County have signed the California State Master Mutual Aid Agreement
- The County Mutual Aid Plan governs day-to-day interagency cooperation when an emergency exceeds the operational capability of any fire agency
- Automatic aid agreements are sometimes necessary if an agency has a difficult area to serve, and a neighboring agency's station is better positioned to respond
- However, sometimes an imbalance occurs, e.g. ConFire/ECCFPD, that requires modifications to an agreement to limit impacts on the agency providing more aid
- RHFPD station closure will adversely affect the automatic aid and response times in West County, as it will be less able to assist its neighbors, and they will reach limits in their ability to aid RHFPD

Aid Agreements (1 of 2)

Boundary	Automatic Aid Provided to	Automatic Aid Received from	Mutual Aid Partners
City of El Cerrito FD (ECR) Participates in the CCRFCC Boundary Drop Agreement	Cities of Albany, Berkeley* , Pinole and Richmond; ConFire* , MOFD, RHFPD	Cities of Albany, Berkeley* and Richmond	Cities of Berkeley and Oakland, ConFire, EBRPD, and CAL FIRE
City of Pinole FD (POE) Participates in the CCRFCC Boundary Drop Agreement	City of El Cerrito, ConFire**, CCFPD RHFPD**	ConFire**, CCFPD RHFPD**	EBRPD and CAL FIRE
City of Richmond FD	Cities of El Cerrito and Pinole, ConFire* , RHFPD	Cities of El Cerrito and Pinole, ConFire* , RHFPD	ECCFPD, CAL FIRE, CCFPD, EBRPD, MOFD, SRVFPD
Contra Costa County FPD (ConFire, or CON) Participates in the CCRFCC Boundary Drop Agreement	Cities of Benicia, Pinole** and Richmond* ; ECCFPD, MOFD, RHFPD**, SRVFPD	Cities of Richmond* and Pinole**, ECCFPD, MOFD, RHFPD**, SRVFPD	EBRPD, CAL FIRE

Aid Agreements (2 of 2)

Boundary	Automatic Aid Provided to	Automatic Aid Received from	Mutual Aid Partners
Crockett-Carquinez FPD (CCFPD, or CRK) Participates in the CCRFCC Boundary Drop Agreement	City of Vallejo, RHFPD	RHFPD	City of Vallejo, EBRPD, CAL FIRE
East Contra Costa FPD (ECCFPD, or CCE) Participates in the CCRFCC Boundary Drop Agreement	ConFire	ConFire, CAL FIRE**	Alameda County FD, CAL FIRE**, EBRPD, Stockton (STO), Tracy (TRY)
Moraga-Orinda FD (MOFD, or MOR) Participates in the CCRFCC Boundary Drop Agreement	City of Oakland, Confire	Cities of Oakland and El Cerrito, Confire	Cities of Berkeley* and Oakland, CAL FIRE, EBRPD*, Alameda County
Rodeo-Hercules FPD (RHFPD, or RDO) Participates in the CCRFCC Boundary Drop Agreement	City of Pinole**, ConFire**, CCFPD*	City of Pinole**, ConFire**, CCFPD*	EBRPD, and CAL FIRE
San Ramon Valley FPD (SRVFPD)	Alameda County, ConFire	Alameda County, ConFire	Cities of El Cerrito, Richmond, and Pinole, Alameda County, ECCFPD, CAL FIRE, CCFPD, MOFD, RHFPD, LAP (Camp Parks ArmyTraining near Dublin)

ECCFPD – Observations + Recommendations



- Cities of Oakley and Brentwood need to implement coordinated development fees for fire service on new developments
- Cities consider other sources of development-related revenue



- Standards of Cover (SOC) Study + Community Education



- Additional Revenue Generation Essential
- Build Community Support for Special Tax
- Build support for and conduct an election to establish an independent district board

—

RHFPPD – Observations + Recommendations



- The community of Rodeo and the City of Hercules need to accept and acknowledge that a one-station configuration is unacceptable
- Expand Community Education + Outreach to build Community Support for Special Tax



- Pursue special taxes to increase revenue and explore alternatives to retirement funding



- Create a fiscal stabilization plan and pursue special tax passage to bring the District's revenue to a level adequate to support two stations.



- Actively participate and embrace the development of increased levels of shared staffing, equipment and facilities in West County, and increased role for ConFire

- Enhance West County Fire Service Coalition
- Explore Staffing Configurations through SOC



ConFire – Observations + Recommendations



- Contract Service Opportunities with Rodeo Hercules FPD and Pinole FPD
- Continue to work with West County Fire agencies on contract service opportunities



- Continue to participate in the Battalion 7 program and the recommended Standards of Cover Study.



- Consider Annexation Opportunities of unserved areas

SOI Recommendations

ConFire



- Consider Annexation Opportunities
- No Changes to Sphere of Influence (SOI) (possible boundary cleanup w/ECCFPD)

East Contra Costa FPD



- Provisional SOI recommended,
- Annual reports to LAFCO

Other Districts



- Affirm existing SOIs

Rodeo Hercules FPD



- Provisional SOI recommended
- Annual reports to LAFCO

Thank you.
Questions?



Fire Service Response Adequacy - Resources

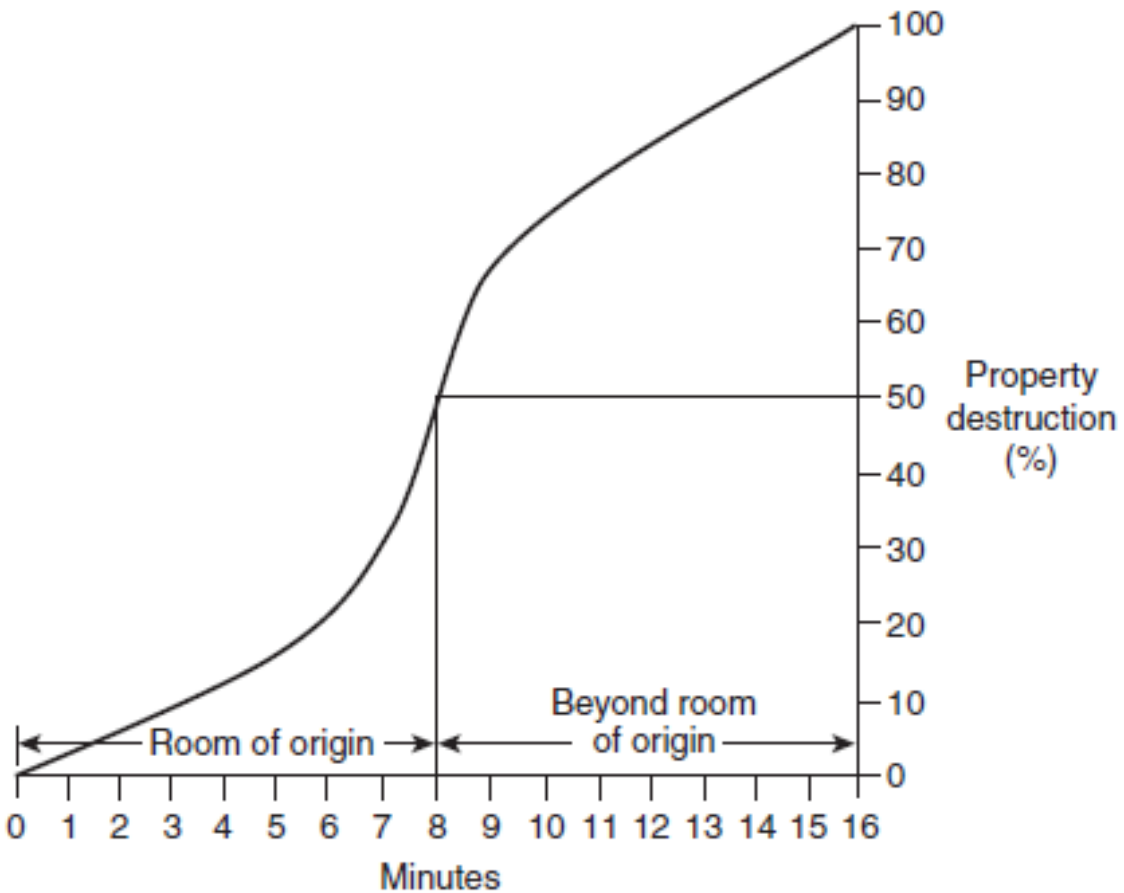


Task	Fire Personnel	Company
Command/Size Up	1	Battalion Chief
Fire Attack Lines	2	1st Engine
Pump Operator	1	1st Engine
Primary Search/Rescue	2	2nd Engine
Water Supply	1	2nd Engine
Two Out/Utilities and Safety	3	3rd Engine
Ventilation/Ladders	2	1st Truck company
Forcible Entry/Search/Rescue Support	2	1st truck company
Total Initial Fire Attack Personnel	14	5 fire apparatus



Photo: Flickr.com

Fire Propagation Curve



Cascade of Events

